

# BREEZE

Carlo Bartoli / 1995

segls

## Stacking armchair

**Frame:** high strength aluminium  
 Ø 25mm available in anodized or powder coated finish.

**Seat frame:** powder coated die-cast aluminium

**Seat and back:** recyclable polypropylene

**Spacers and feet:** in high strength recyclable thermoplastic material.



## Awards:

**2004 / Italy** - Selected for the "Coffee Design" collection by the Triennale di Milano Breeze sales reaches 1.000.000 units.

**2000 / Italy** - Selected for Commemorative Stamp Collection by the Italian Postal Service.

**1996 / Germany** - Vitra Design Museum.  
 Greece - Thessaloniki Design museum.  
 USA - I.D. Design Distinction Award  
 I.I.D.A. Apex Product Design Award  
 Germany - High Design Quality Award  
 I.F. Industrie Forum Design Award  
 Red Dot Design Award from  
 Design-Zentrum Nordrhein Westfalen.



	Article	Finish	Powder coated seat frame and frame	Powder coated seat frame/Satin 61 or polished 64 anodized aluminium frame	pcs / dimensions volume / gross weight product net weight
<b>Armchair</b>	S0466 S0466 E	Polypropylene Polypropylene for outdoor use			4 pcs / 59x62x98 cm 0,36 m <sup>3</sup> / 20,5 Kg 4,3 Kg

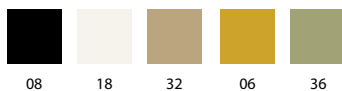
## Accessories

Ganging device in metal, powder coated aluminium 58 *MGANBREEZE*

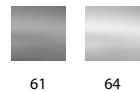
Kart Universal trolley (art.C0514)

## Finishes

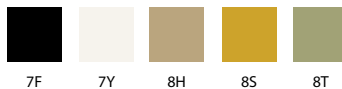
### Powder coated aluminium frame



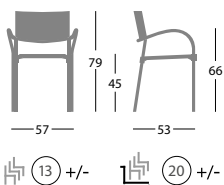
### Anodized aluminium frame



### Polypropylene



## Dimensions



## Fire-retardant version

Seat and back in fire retardant version  
 black colour 7F

*NOTE: fire retardant compounds may cause slightly difference of colours*

## Fire retardant certifications

Breeze meets Class 1 Standards by the Italian Minister of Interior.

## Resistance tests

Mod. Breeze S0466  
 UNI 5687/73 - seat frame durability to corrosion: 120 H.

Mod. Breeze S0466  
 ANSI-BIFMA 5.1-1993/6 - back impact test  
 ANSI-BIFMA 5.1-1993/9 - seat drop test  
 ANSI-BIFMA 5.1-1993/12 - cyclic seat impact test  
 ANSI-BIFMA 5.1-1993/13 - stability test  
 ANSI-BIFMA 5.1-1993/14 - vertical arm strength test  
 ANSI-BIFMA 5.1-1993/15 - horizontal arm strength test  
 ANSI-BIFMA 5.1-1993/17 - back durability test  
 ANSI-BIFMA 5.1-1993/19 - leg strength/front load test  
 ANSI-BIFMA 5.1-1993/20 - leg strength/side load test  
 UNI 8587-84 - back strength test  
 UNI 9083-87 - cyclic fall-down test  
 UNI 9088-87-84 - leg strength/side load test  
 UNI 9089-87 - back impact test  
 UNI 9089/87 - arm impact test  
 UNI 8589-84 - vertical arm strength test  
 UNI 8590-84 - horizontal arm strength test  
 UNI 8584-84 - back durability test  
 UNI 8585-84 - seat impact test  
 UNI 8586-84 - cyclic seat impact test  
 EN 1022/96 - stability test